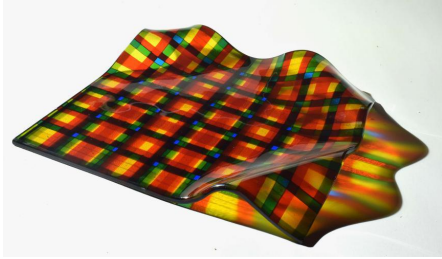


Kiln-forming glass 1 & 2
a master's approach
& be inspired

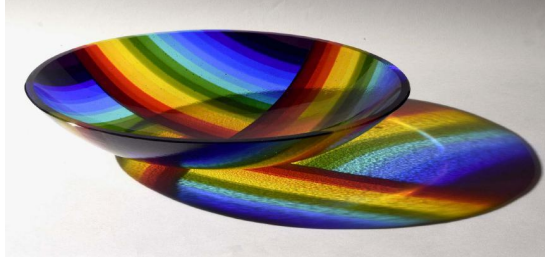


Special edition, 40 years studio
Frank van den Ham

Projects



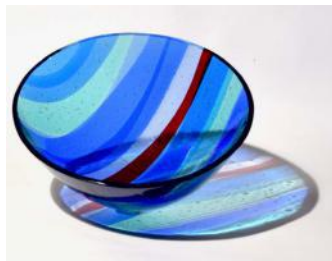
page 27



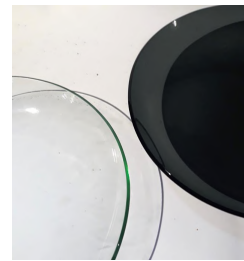
page 30



page 37



page 40



page 34



page 47



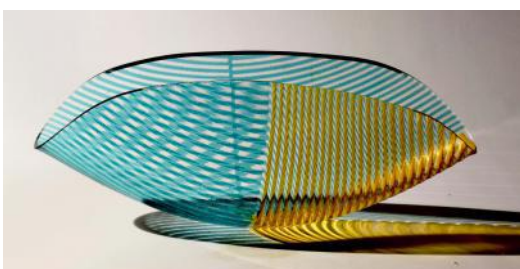
page 50



page 53



page 65



page 69



page 78



page 72



page 75



page 81



page 89



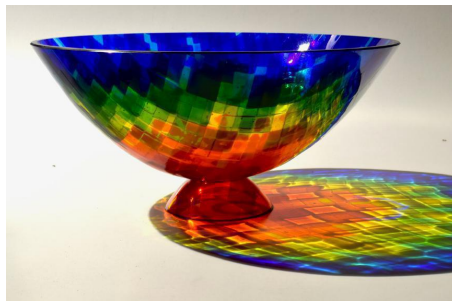
page 93



page 86



Page 21



Page 28



Page 37



Page 42



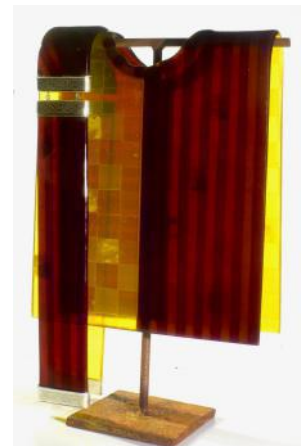
Page 44



Page 51



Page 52



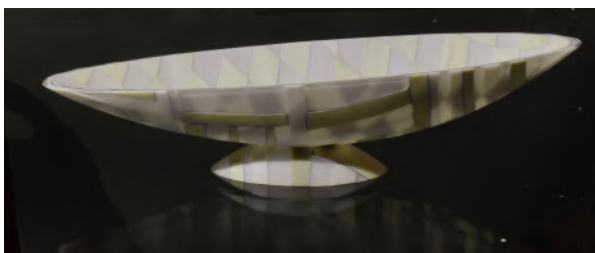
Page 58



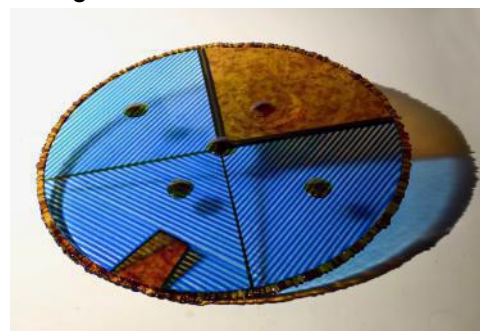
Page 63



Page 71



Page 72



Page 88



Page 79



Page 95



Page 108

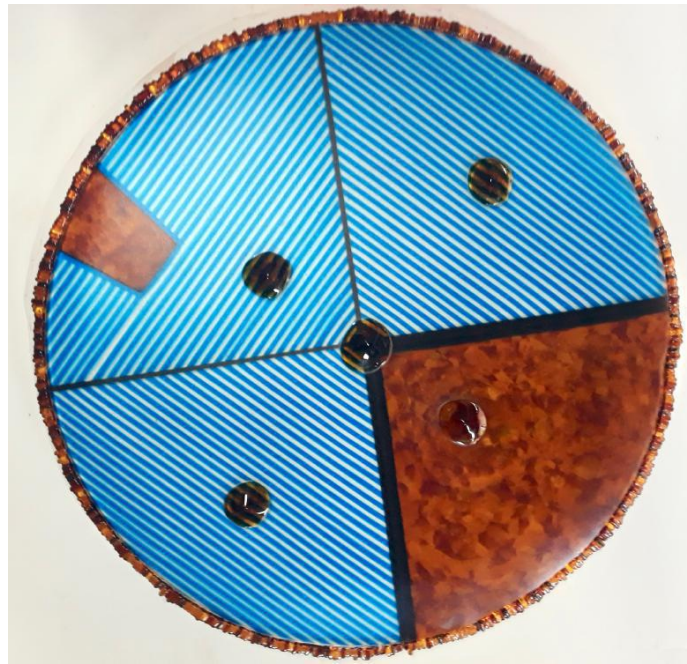


Page 117



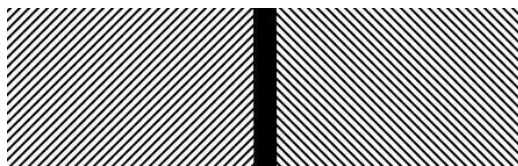
Page 128

A round Shield



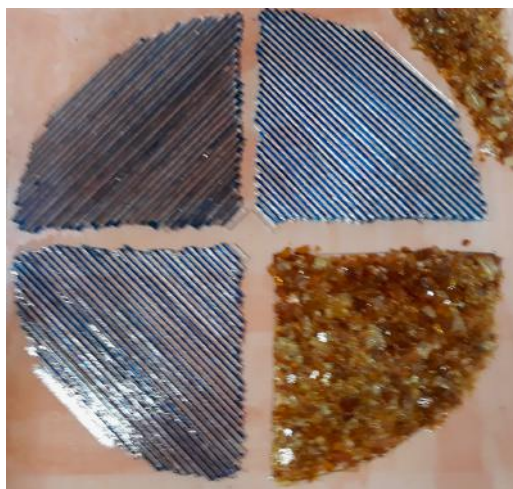
Ø 48, depth 3 cm

Most of the technique used for the first shield was used for this shield as well. Three parts made of strips on edge, 8 mm wide, and one part of crushed glass. Of course, here also, we first fused the pieces to make sure that the lines would connect correctly.



Colours used:

1138 dark amber, 1137 medium amber, 1437 light amber,
1320 dark yellow, 1116 turquoise blue, 1419 tan, tekta clear



The little part top right is meant to become a little 'repair' in the shield.